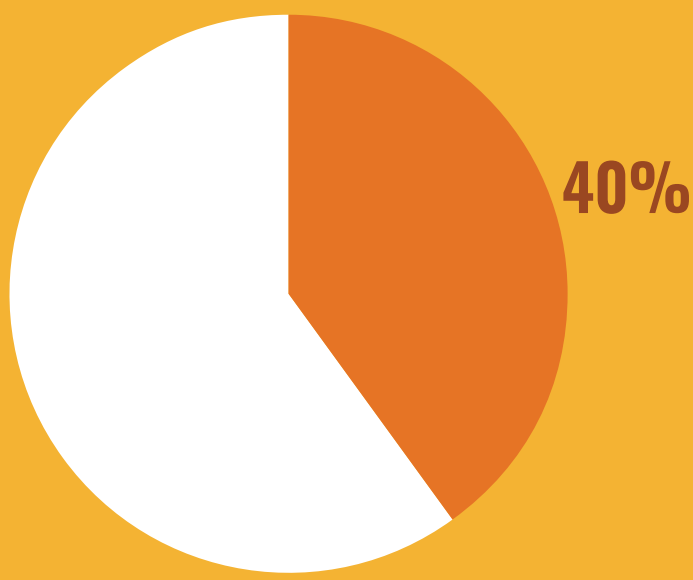
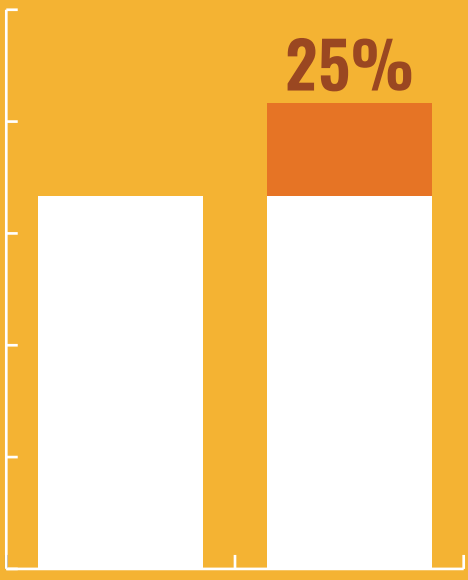


TIRE INSPECTIONS 101

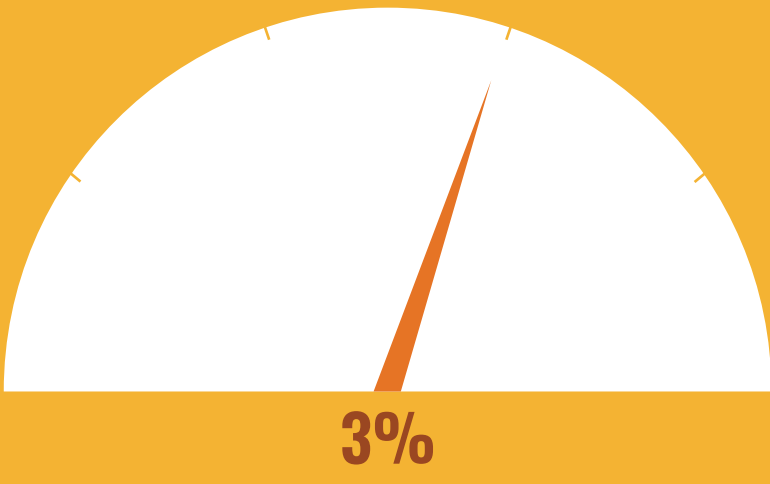
Why Are Tire Inspections Crucial?



30-40% of unscheduled fleet maintenance costs are due to tire-related issues.



Proper tire care can extend tire life by 25%, cutting replacement costs.



Well-maintained tires improve fuel efficiency by up to 3%, leading to significant fleet savings.

Benefits of Regular Tire Inspections for Fleets

- ✓ **Safety:** Prevent accidents by identifying issues like low pressure or tread problems early.
- ✓ **Cost Savings:** Avoid costly replacements or roadside repairs by catching wear and leaks in time.
- ✓ **Compliance:** Stay aligned with safety regulations and avoid fines.
- ✓ **Minimized Downtime:** Proactive checks prevent breakdowns and keep schedules on track.
- ✓ **Fuel Efficiency:** Properly inflated tires reduce fuel usage and operational expenses.



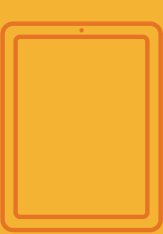
Step-by-Step Tire Inspection Guide

- 1. Visual Examination**
 - Check for cracks, cuts, punctures, or embedded debris.
 - Look for bald spots or uneven tread wear.
- 2. Measure Tread Depth**
 - Front tires: Minimum 4/32" tread depth.
 - Rear tires: Minimum 2/32" tread depth.
 - Use a tread-depth gauge to ensure compliance with FMCSA standards.
- 3. Check Tire Pressure**
 - Use a calibrated gauge to ensure proper PSI as per manufacturer's recommendation.
 - Avoid both underinflation and overinflation.
- 4. Inspect Valve Stems and Caps**
 - Look for cracks, leaks, or loose fittings to prevent slow air leaks.
- 5. Look for Alignment Issues**
 - Uneven wear on one side of a tire may signal misaligned wheels.
- 6. Rotate Tires Regularly**
 - Follow a routine schedule (every 5,000–7,500 miles) to reduce uneven wear.

How Technology Can Help



Fleet Management Software: Tracks inspection data, wear trends, and maintenance schedules.



Mobile Inspection Apps: Log inspections, share data, and ensure compliance.



AI-Powered Predictive Maintenance: Identifies high-risk tires using data and schedules preemptive repairs.

To learn more about tire inspections, please visit assetworks.com/fleet.