

AI DASHCAM



Challenges

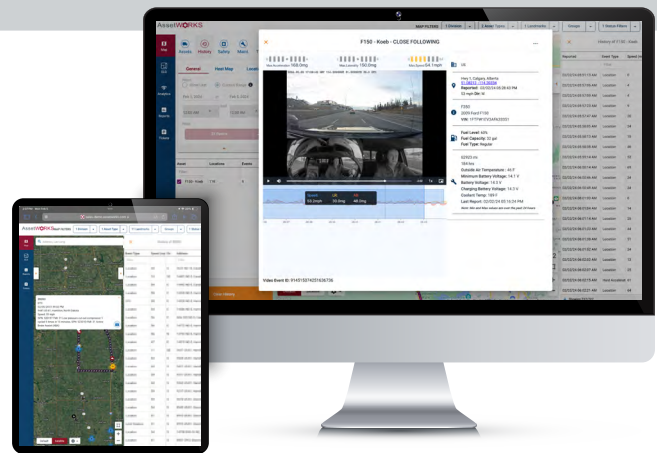
Inaccurately monitoring driver behavior and incidents. Liability issues and difficulties ensuring compliance with safety policies.

Solution Overview

AssetWorks AI Dashcam solution captures video from up to four cameras to analyze driver behavior and road conditions to mitigate poor driving habits and enhance safety across an entire fleet. The dual-facing camera setup enables fleets to not only assess road events but also monitor activities inside the vehicles- seamlessly integrating event data into AssetWorks GPS. This integration provides valuable insight, such as identifying correlations between behaviors like tailgating and brake pad wear, to optimize operating costs and enhance overall efficiency.

Key Features

- Built into AssetWorks GPS
- Dual-facing cameras
- 2 optional auxiliary cameras
- Customizable privacy options
- Access to live video even when the vehicle is off
- Historical video playback
- Edge-AI enabling onboard coaching
- Driver behavior analysis
- Posted speed limit tracking
- Customizable alerts, parameters, and notifications
- Accident detection
- Cloud connectivity



Benefits



Historical Video Playback & 24/7 Access

Download videos 24/7 and store them in the AssetWorks GPS portal for one year before being transferred to cold storage for three years.



Safety Forward with Self-Coaching

With collision prevention technology, edge-AI and self-coaching mechanisms can assist drivers and address safety violations in real time.



Legal Protection

Video footage protects against false liability claims, reducing legal expenses associated with disputes.



Driver Accountability

Monitor and analyze driver behavior to promote accountability to safety protocols- leading to lower operational costs.

For more information, contact your AssetWorks Sales Representative or visit us online at assetworks.com.

AssetWORKS | GPS