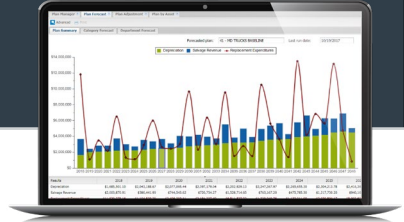




# ANALYTICS & PLANNING

Automate your calculations and analyses



The **AssetWorks Capital Asset Management (CAM) Analytics and Planning modules** have the tools to automate the calculation and analysis of asset life cycle costs and the planning of replacement assets.

## Analytics Features and Benefits

The CAM Analytics module automates analysis through pre-built models that generate results in seconds with few inputs from the user.

- Automates calculation of lifecycle costs
- Allows users to build custom lifecycle models
- Provides scoring tools to help users prioritize which assets should be replaced

## Planning Features and Benefits

The CAM Planning module makes it easy to develop multi-year replacement plans and compare plan results when applying different replacement guidelines, costs, and scoring assumptions to see the impacts of those options on both capital and maintenance costs.

- Establishes baseline plans to understand current replacement backlog
- Provides long-term strategic plans to see cyclical impacts of replacement decisions
- Provides short-term tactical plans to identify and rank candidates for next budget year(s)

To learn more about the module, please contact your **AssetWorks Sales representative** or visit us online at [assetworks.com/fleet](https://assetworks.com/fleet).