

# Four States

## Switch Fleet Management to

# MAXIMUS

## Software

*Indiana, Maine, Minnesota, and Washington have adopted the FleetFocus fleet management software tool to improve functionality, consolidate data, and better manage the central fleet and motor pool.*

**T**he states of Indiana, Maine, Minnesota, and Washington have each signed contracts to implement the FleetFocus government fleet management software tool provided by MAXIMUS.

Within the past 12 months, MAXIMUS has grown its transportation Enterprise Asset Management (EAM) software solutions customer list to include 23 U.S. states. MAXIMUS, based in Reston, Va., also is a provider of transportation EAM software in

it is cost-effective to outsource work, and parts inventory control.

### Indiana's Statewide Solution

The State of Indiana will implement MAXIMUS FleetFocus as its statewide fleet management solution. The state oversees more than 13,000 units and 50 fleet maintenance facilities. In addition to improved functionality and technological advances, Indiana chose MAXIMUS because FleetFocus allows the state to convert three existing historical information systems into one common database with standardized coding for the entire state.

"FleetFocus tracks vehicle costs from procurement to ordering as it is maintained throughout its entire life until disposal," said Hines.

### Minnesota Consolidates Data

The State of Minnesota will also use MAXIMUS FleetFocus to provide a statewide fleet management software solution to manage its fleet of more than 16,000 units. FleetFocus will enable the state to consolidate data previously difficult to summarize. The Department of Transportation has implemented FuelFocus, a fuel management system that is a fully integrated component of FleetFocus.

"FuelFocus works off the same database as FleetFocus and updates in real-time," said Hines. "It provides access to engine fault codes that provide preventive maintenance alerts at the time of refueling. It also captures the cost of fuel

and amount of consumption."

### Maine Seeks to Manage Central Fleet

The State of Maine Department of Transportation, seeking a flexible and scalable solution to manage its central fleet and remote locations, is also deploying the MAXIMUS EAM software solution. The statewide implementation will track more than 5,000 units.

### Washington Motor Pool Uses System

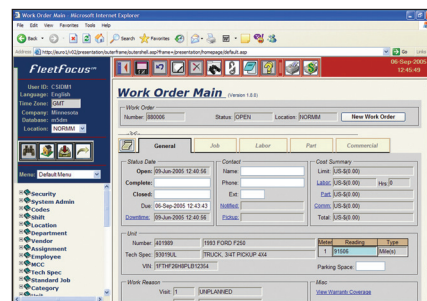
The Washington State Department of General Administration (motor pool) has also contracted to use FleetFocus. The motor pool is a program within the Department of General Administration that provides daily rental and permanently assigned vehicles for use by state agencies. Currently, the 1,400-vehicle fleet consists of automobiles, SUVs, and light trucks. The motor pool expects to double in size to 2,800 vehicles in the next four years. Washington will utilize the asset and maintenance management capabilities of FleetFocus and the solution's online reservation system for motor pool. **GF**



**FuelFocus provides PM alerts at the time of refueling.**

120 cities across the U.S. and Canada, including 37 of the 50 most populated cities in America, more than 75 transit systems, including six of the top 10 U.S. transit systems, and many counties and federal agencies.

According to John Hines, MAXIMUS division president of asset solutions, key FleetFocus features include warranty tracking in compliance with the vehicle's preventive maintenance schedule, labor management, which determines how quickly work is repaired and whether



**Fleet managers can request services on the FleetFocus homepage.**